

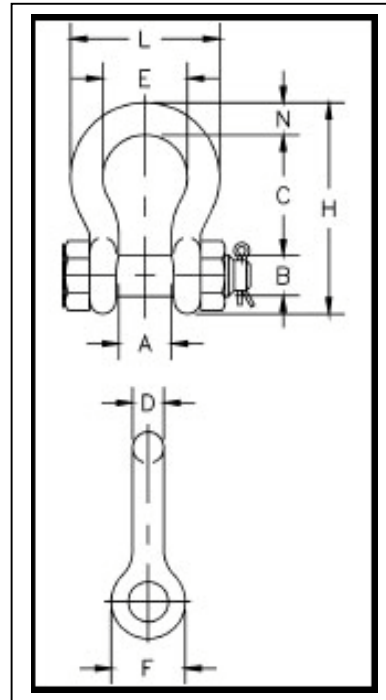


# LIFTING GEAR HIRE CORPORATION

PHONE: 800-878-7305 FAX: 708-430-3536

www.lgh-usa.com

## BOLT TYPE ANCHOR SHACKLES CROSBY



Nominal Shackle Size (in.)	Working Load Limit* (tons)	Dimensions (in.)														Tolerance +/-	
		A	B	C	D	E	F	G	H	K	L	M	N	P	R	C&G	A
3/16	1/3 ‡	.38	.25	.88	.19	.60	.56	—	1.47	—	.98	—	.19	1.29	—	.06	.06
1/4	1/2	.47	.31	1.13	.25	.78	.61	.75	1.84	1.59	1.28	.97	.25	1.56	.25	.06	.06
5/16	3/4	.53	.38	1.22	.31	.84	.75	1.00	2.09	1.91	1.47	1.16	.31	1.82	.31	.06	.06
3/8	1	.66	.44	1.44	.38	1.03	.91	1.22	2.49	2.30	1.78	1.41	.38	2.17	.38	.13	.06
7/16	1 1/2	.75	.50	1.69	.44	1.16	1.06	1.42	2.91	2.66	2.03	1.62	.44	2.51	.44	.13	.06
1/2	2	.81	.63	1.88	.50	1.31	1.19	1.63	3.28	3.03	2.31	1.81	.50	2.80	.50	.13	.06
5/8	3 1/4	1.06	.75	2.38	.63	1.69	1.50	2.00	4.19	3.75	2.94	2.31	.69	3.53	.63	.13	.06
3/4	4 3/4	1.25	.88	2.81	.75	2.00	1.81	2.38	4.97	4.53	3.50	2.75	.81	4.07	.81	.25	.06
7/8	6 1/2	1.44	1.00	3.31	.88	2.28	2.09	2.81	5.83	5.33	4.03	3.19	.97	4.71	.97	.25	.06
1	8 1/2	1.69	1.13	3.75	1.00	2.69	2.38	3.19	6.56	5.94	4.69	3.69	1.06	5.31	1.00	.25	.06
1 1/8	9 1/2	1.81	1.25	4.25	1.13	2.91	2.69	3.58	7.47	6.78	5.16	4.06	1.25	5.90	1.25	.25	.06
1 1/4	12	2.03	1.38	4.69	1.25	3.25	3.00	3.94	8.25	7.50	5.75	4.53	1.38	6.51	1.38	.25	.06
1 3/8	13 1/2	2.25	1.50	5.25	1.38	3.63	3.31	4.38	9.16	8.28	6.38	5.00	1.50	7.21	1.50	.25	.13
1 1/2	17	2.38	1.63	5.75	1.50	3.88	3.63	4.81	10.00	9.06	6.88	5.38	1.62	7.73	1.62	.25	.13
1 3/4	25	2.88	2.00	7.00	1.75	5.00	4.19	5.75	12.34	10.97	8.86	6.38	2.25	9.05	2.12	.25	.13
2	35	3.25	2.25	7.75	2.00	5.75	4.81	6.75	13.68	12.28	9.97	7.25	2.40	10.41	2.00	.25	.13
2 1/2	55	4.13	2.75	10.50	2.62	7.25	5.69	8.00	17.84	14.84	12.87	9.38	3.13	13.56	2.62	.25	.25
3	† 85	5.00	3.25	13.00	3.00	7.88	6.50	8.50	21.50	16.88	14.36	11.00	3.62	16.50	3.50	.25	.25
3 1/2	†120 ‡	5.25	3.75	14.63	3.62	9.00	8.00	—	24.63	—	16.50	—	4.12	19.00	—	.25	.25
4	†150 ‡	5.50	4.25	14.50	4.10	10.00	9.00	—	25.69	—	18.42	—	4.56	19.75	—	.25	.25