



LIFTING GEAR HIRE CORPORATION

PHONE: 800-878-7305 | FAX: 708-430-3536 | www.lgh-usa.com

Modular 50 - Beam Specifications Modular Spreader Beams

- Rated at 50 ton WLL at 20 ft. span. See Load Table for WLL at spans greater than 20 ft.
- Base sling angle, ∞ , 45 degrees or greater.
- End Units & Drop Links are rated at 25 tons (50 tons combined capacity).
- Bolt tightening torque: 110 pound-foot.

Table 1: Component List		
Part Ref:	Description	Weight/Item
P1	End Unit (1 1/2 ft.)	84 lbs.
P2	Drop Link	24 lbs.
P3	12 ft. Strut	287 lbs.
P3	6 ft. Strut	170 lbs.
P3	3 ft. Strut	110 lbs.
P3	2 ft. Strut	93 lbs.
P3	1 ft. Strut	73 lbs.
P4	35t Shackle	45 lbs.
P5	35t Shackle	45 lbs.
P6	M20x65 HT Bolts, Nuts & Washers	—

- Max number of struts allowed in spreader assembly: 5
- Assemble longer struts in the center of the spreader configuration
- Sling angle is crucial to safe use of spreader

Typical Spreader Assembly

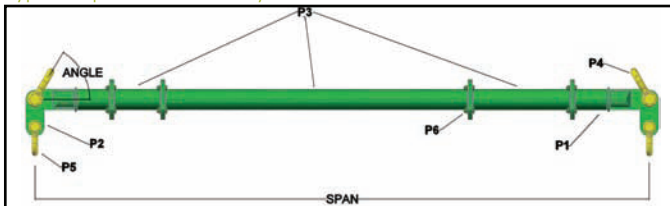


Table 2: Load v. Span								
45° BSA			Recommended Configuration EU – End Unit (1 1/2 ft.)					
Span (ft.)	WLL (tons)	Min. Sling Length (ft.)						
3	50	2 1/4	EU	EU	—	—	—	—
4	50	3	EU	1	EU	—	—	—
5	50	3 3/4	EU	2	EU	—	—	—
6	50	4 1/2	EU	3	EU	—	—	—
7	50	5	EU	3	1	EU	—	—
8	50	5 3/4	EU	3	2	EU	—	—
9	50	6 1/2	EU	6	EU	—	—	—
10	50	7 1/4	EU	6	1	EU	—	—
11	50	8	EU	6	2	EU	—	—
12	50	8 1/2	EU	6	3	EU	—	—
13	50	9 1/4	EU	3	6	1	EU	—
14	50	10	EU	3	6	2	EU	—
15	50	10 3/4	EU	12	EU	—	—	—
16	50	11 1/2	EU	12	1	EU	—	—
17	50	12	EU	12	2	EU	—	—
18	50	12 3/4	EU	12	3	EU	—	—
19	50	13 1/2	EU	3	12	1	EU	—
20	50	14 1/4	EU	3	12	2	EU	—
21	47	15	EU	6	12	EU	—	—
22	43	15 3/4	EU	6	12	1	EU	—
23	38	16 1/4	EU	6	12	2	EU	—
24	34	17	EU	6	12	3	EU	—
25	32	17 3/4	EU	6	12	3	1	EU
26	30	18 1/2	EU	6	12	3	2	EU
27	27	19	EU	12	12	EU	—	—
28	25	20	EU	12	12	1	EU	—
29	23	20 1/2	EU	12	12	2	EU	—
30	21	21 1/4	EU	12	12	3	EU	—
31	19	22	EU	3	12	12	1	EU
32	18	22 3/4	EU	3	12	12	2	EU
33	16	23 1/2	EU	6	12	12	EU	—
34	15	24 1/4	EU	6	12	12	1	EU
35	14	25	EU	6	12	12	2	EU
36	12	25 1/2	EU	6	12	12	3	EU