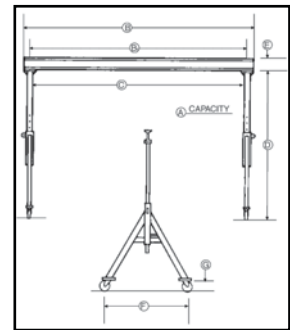
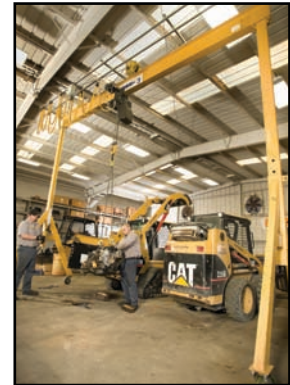


# Steel Gantries

1 - 3 ton Specifications – A Series



A Series – Steel Adjustable Height/Span												
A Cap.	B Overall Span	B1 Span Between Wheel Centers	C Clear Span	D Height		E I-Beam Depth	F Tread	G Caster Dia.	With I-Beam		Without I-Beam	
				Max	Min				Weight (lbs)	Model	Weight (lbs)	Model
1 Ton	8'	7'-3"	6'-11"	10'-2"	7'-2"	6"	5'-5"	6"	404	1A0810B	304	1A0810WOB
		7'-3"	6'-11"	12'-8"	9'-8"	6"	5'-5"	6"	428	1A0812B	328	1A0812WOB
		7'-3"	6'-10"	15'-6"	12'-0"	6"	6'-6"	8"	694	1A0815B	594	1A0815WOB
	10'	9'-3"	8'-11"	10'-2"	7'-2"	6"	5'-5"	6"	429	1A1010B	304	1A1010WOB
		9'-3"	8'-11"	12'-8"	9'-8"	6"	5'-5"	6"	453	1A1012B	328	1A1012WOB
		9'-3"	8'-10"	15'-6"	12'-0"	6"	6'-6"	8"	719	1A1015B	594	1A1015WOB
	12'	11'-3"	10'-11"	10'-2"	7'-2"	6"	5'-5"	6"	454	1A1210B	304	1A1210WOB
		11'-3"	10'-11"	12'-8"	9'-8"	6"	5'-5"	6"	478	1A1212B	328	1A1212WOB
		11'-3"	10'-10"	15'-6"	12'-0"	6"	6'-6"	8"	744	1A1215B	594	1A1215WOB
	15'	14'-3"	13'-11"	10'-2"	7'-2"	8"	5'-5"	6"	533	1A1510B	304	1A1510WOB
		14'-3"	13'-11"	12'-8"	9'-8"	8"	5'-5"	6"	557	1A1512B	328	1A1512WOB
		14'-3"	13'-10"	15'-6"	12'-0"	8"	6'-6"	8"	823	1A1515B	594	1A1515WOB
20'	19'-3"	18'-11"	10'-2"	7'-2"	10"	5'-5"	6"	812	1A2010B	304	1A2010WOB	
	19'-3"	18'-11"	12'-8"	9'-8"	10"	5'-5"	6"	836	1A2012B	328	1A2012WOB	
	19'-3"	18'-10"	15'-6"	12'-0"	10"	6'-6"	8"	1102	1A2015B	594	1A2015WOB	
	24'-3"	23'-11"	10'-2"	7'-2"	12"	5'-5"	6"	903	1A2510B	304	1A2510WOB	
	24'-3"	23'-11"	12'-8"	9'-8"	12"	5'-5"	6"	927	1A2512B	328	1A2512WOB	
	24'-3"	23'-10"	15'-6"	12'-0"	12"	6'-6"	8"	1,193	1A2515B	594	1A2515WOB	
30"	29'-1"	28'-8"	12'-6"	9'-0"	15"	6'-6"	8"	1,822	1A3012B	535	1A3012WOB	
	29'-1"	28'-8"	15'-6"	12'-0"	15"	6'-6"	8"	1,881	1A3015B	394	1A3015WOB	
35"	34'-1"	33'-8"	12'-6"	9'-0"	15**	6'-6"	8"	2,036	1A3512B	535	1A3512WOB	
	34'-1"	33'-8"	15'-6"	12'-0"	15**	6'-6"	8"	2,095	1A3515B	394	1A3515WOB	
40"	39'-1"	38'-8"	12'-6"	9'-0"	15**	6'-6"	8"	2,154	1A4012B	535	1A4012WOB	
	39'-1"	38'-8"	15'-6"	12'-0"	15**	6'-6"	8"	2,213	1A4015B	394	1A4015WOB	
2 Ton	10'	9'-3"	8'-10"	12'-6"	9'-0"	8"	6'-6"	8"	719	2A1012B	535	2A1012WOB
		9'-3"	8'-10"	15'-6"	12'-0"	8"	6'-6"	8"	778	2A1015B	394	2A1015WOB
	15'	14'-3"	13'-10"	12'-6"	9'-0"	10"	6'-6"	8"	916	2A1512B	535	2A1512WOB
		14'-3"	13'-10"	15'-6"	12'-0"	10"	6'-6"	8"	975	2A1515B	394	2A1515WOB
	20'	19'-3"	18'-10"	12'-6"	9'-0"	12"	6'-6"	8"	1,171	2A2012B	535	2A2012WOB
		19'-3"	18'-10"	15'-6"	12'-0"	12"	6'-6"	8"	1,230	2A2015B	394	2A2015WOB
	25'	24'-1"	23'-8"	12'-6"	9'-0"	15"	6'-6"	8"	1,608	2A2512B	535	2A2512WOB
		24'-1"	23'-8"	15'-6"	12'-0"	15"	6'-6"	8"	1,667	2A2515B	394	2A2515WOB
30'	29'-1"	28'-8"	12'-6"	9'-0"	18"	6'-6"	8"	2,176	2A3012B	535	2A3012WOB	
	29'-1"	28'-8"	15'-6"	12'-0"	18"	6'-6"	8"	2,235	2A3015B	394	2A3015WOB	
35'	34'-1"	33'-8"	12'-6"	9'-0"	18**	6'-6"	8"	2,449	2A3512B	535	2A3512WOB	
	34'-1"	33'-8"	15'-6"	12'-0"	18**	6'-6"	8"	2,508	2A3515B	394	2A3515WOB	
40'	39'-1"	38'-8"	12'-6"	9'-0"	18**	6'-6"	8"	3,136	2A4012B	535	2A4012WOB	
	39'-1"	38'-8"	15'-6"	12'-0"	18**	6'-6"	8"	3,195	2A4015B	394	2A4015WOB	
3 Ton	10'	9'-1"	8'-7"	12'-10"	9'-4"	10"	6'-6"	8"	793	3A1012B	609	3A1012WOB
		9'-1"	8'-7"	15'-10"	12'-4"	10"	6'-6"	8"	857	3A1015B	673	3A1015WOB
	15'	14'-1"	13'-7"	12'-10"	9'-4"	10"	6'-6"	8"	990	3A1512B	609	3A1512WOB
		14'-1"	13'-7"	15'-10"	12'-4"	10"	6'-6"	8"	1,054	3A1515B	673	3A1515WOB
	20'	19'-1"	18'-7"	12'-10"	9'-4"	15"	6'-6"	8"	1,469	3A2012B	609	3A2012WOB
		19'-1"	18'-7"	15'-10"	12'-4"	15"	6'-6"	8"	1,533	3A2015B	673	3A2015WOB
	25'	24'-1"	23'-7"	12'-10"	9'-4"	18"	6'-6"	8"	2,021	3A2512B	654	3A2512WOB
		24'-1"	23'-7"	15'-10"	12'-4"	18"	6'-6"	8"	2,066	3A2515B	699	3A2515WOB
30'	29'-1"	28'-7"	12'-10"	9'-4"	18**	6'-6"	8"	2,601	3A3012B	654	3A3012WOB	
	29'-1"	28'-7"	15'-10"	12'-4"	18**	6'-6"	8"	2,646	3A3015B	699	3A3015WOB	
35'	34'-1"	33'-7"	12'-10"	9'-4"	18**	6'-6"	8"	3,293	3A3512B	654	3A3512WOB	
	34'-1"	33'-7"	15'-10"	12'-4"	18**	6'-6"	8"	3,338	3A3515B	699	3A3515WOB	
40'	39'-1"	38'-7"	12'-10"	9'-4"	18**	6'-6"	8"	3,670	3A4012B	654	3A4012WOB	
	39'-1"	38'-7"	15'-10"	12'-4"	18**	6'-6"	8"	3,715	3A4015B	699	3A4015WOB	



Green shading reflects rental inventory.  
\* Capped I-Beam

Sales@lgh-usa.com | Hoisting



# Steel Gantries

## 5 - 10 ton Specifications – A Series

A Series – Steel Adjustable Height/Span												
A Cap.	B Overall Span	B1 Span Between Wheel Centers	C Clear Span	D Height		E I-Beam Depth	F Tread	G Caster Dia.	With I-Beam		Without I-Beam	
				Max	Min				Weight (lbs)	Model	Weight (lbs)	Model
5 Ton	10'	9'-1"	8'-7"	12'-10"	9'-4"	10"	6'-6"	8"	1,040	5A1012B	786	5A1012WOB
		9'-1"	8'-7"	15'-10"	12'-4"	10"	6'-6"	8"	1,124	5A1015B	870	5A1015WOB
	15'	14'-1"	13'-7"	12'-10"	9'-4"	15"	6'-6"	8"	1,430	5A1512B	786	5A1512WOB
		14'-1"	13'-7"	15'-10"	12'-4"	15"	6'-6"	8"	1,514	5A1515B	870	5A1515WOB
	20'	19'-1"	18'-7"	12'-10"	9'-4"	18"	6'-6"	8"	1,880	5A2012B	786	5A2012WOB
		19'-1"	18'-7"	15'-10"	12'-4"	18"	6'-6"	8"	1,964	5A2015B	870	5A2015WOB
	25'	24'-1"	23'-7"	12'-10"	9'-4"	18**	6'-6"	8"	2,414	5A2512B	786	5A2512WOB
24'-1"		23'-7"	15'-10"	12'-4"	18**	6'-6"	8"	2,498	5A2515B	870	5A2515WOB	
30'	29'-1"	28'-7"	12'-10"	9'-4"	18**	6'-6"	8"	2,733	5A3012B	786	5A3012WOB	
	29'-1"	28'-7"	15'-10"	12'-4"	18**	6'-6"	8"	2,817	5A3015B	870	5A3015WOB	
35'	34'-1"	33'-7"	12'-10"	9'-4"	18**	6'-6"	8"	3,150	5A3512B	786	5A3512WOB	
	34'-1"	33'-7"	15'-10"	12'-4"	18**	6'-6"	8"	3,408	5A3515B	870	5A3515WOB	
40'	39'-1"	38'-7"	12'-10"	9'-4"	24**	6'-6"	8"	3,986	5A4012B	786	5A4012WOB	
	39'-1"	38'-7"	15'-10"	12'-4"	24**	6'-6"	8"	4,070	5A4015B	870	5A4015WOB	
7 1/2 Ton	10'	9'-1"	8'-7"	13'-0"	9'-0"	12"	6'-6"	12"	1,398	7A1013B	1,080	7A1013WOB
		9'-1"	8'-7"	16'-0"	12'-0"	12"	6'-6"	12"	1,500	7A1016B	1,182	7A1016WOB
	15'	14'-1"	13'-7"	13'-0"	9'-0"	18"	6'-6"	12"	1,900	7A1513B	1,080	7A1513WOB
		14'-1"	13'-7"	16'-0"	12'-0"	18"	6'-6"	12"	2,002	7A1516B	1,182	7A1516WOB
	20'	19'-1"	18'-7"	13'-0"	9'-0"	18**	6'-6"	12"	2,373	7A2013B	1,080	7A2013WOB
		19'-1"	18'-7"	16'-0"	12'-0"	18**	6'-6"	12"	2,475	7A2016B	1,182	7A2016WOB
	25'	24'-1"	23'-7"	13'-0"	9'-0"	18**	6'-6"	12"	2,480	7A2513B	1,080	7A2513WOB
24'-1"		23'-7"	16'-0"	12'-0"	18**	6'-6"	12"	2,580	7A2516B	1,182	7A2516WOB	
30'	29'-1"	28'-7"	13'-0"	9'-0"	24**	6'-6"	12"	3,519	7A3013B	1,080	7A3013WOB	
	29'-1"	28'-7"	16'-0"	12'-0"	24**	6'-6"	12"	3,621	7A3016B	1,182	7A3016WOB	
35'	34'-1"	33'-7"	13'-0"	9'-0"	24**	6'-6"	12"	4,415	7A3513B	1,080	7A3513WOB	
	34'-1"	33'-7"	16'-0"	12'-0"	24**	6'-6"	12"	4,517	7A3516B	1,182	7A3516WOB	
40'	39'-1"	38'-7"	13'-0"	9'-0"	24**	6'-6"	12"	4,892	7A4013B	1,080	7A4013WOB	
	39'-1"	38'-7"	16'-0"	12'-0"	24**	6'-6"	12"	4,994	7A4016B	1,182	7A4016WOB	
10 Ton	10'	9'-1"	8'-7"	13'-0"	9'-0"	18"	6'-6"	12"	1,921	10A1013B	1,374	10A1013WOB
		9'-1"	8'-7"	16'-0"	12'-0"	18"	6'-6"	12"	2,057	10A1016B	1,510	10A1016WOB
	15'	14'-1"	13'-7"	13'-0"	9'-0"	18"	6'-6"	12"	2,194	10A1513B	1,374	10A1513WOB
		14'-1"	13'-7"	16'-0"	12'-0"	18"	6'-6"	12"	2,330	10A1516B	1,510	10A1516WOB
	20'	19'-1"	18'-7"	13'-0"	9'-0"	24"	6'-6"	12"	2,964	10A2013B	1,374	10A2013WOB
		19'-1"	18'-7"	16'-0"	12'-0"	24"	6'-6"	12"	3,110	10A2016B	1,510	10A2016WOB
	25'	24'-1"	23'-7"	13'-0"	9'-0"	24**	6'-6"	12"	3,634	10A2513B	1,374	10A2513WOB
24'-1"		23'-7"	16'-0"	12'-0"	24**	6'-6"	12"	3,770	10A2516B	1,510	10A2516WOB	
30'	29'-1"	28'-7"	13'-0"	9'-0"	24**	6'-6"	12"	4,395	10A3013B	1,374	10A3013WOB	
	29'-1"	28'-7"	16'-0"	12'-0"	24**	6'-6"	12"	4,531	10A3016B	1,510	10A3016WOB	
35'	34'-1"	33'-7"	13'-0"	9'-0"	24**	6'-6"	12"	4,899	10A3513B	1,374	10A3513WOB	
	34'-1"	33'-7"	16'-0"	12'-0"	24**	6'-6"	12"	5,035	10A3516B	1,510	10A3516WOB	
40'	39'-1"	38'-7"	13'-0"	9'-0"	24**	6'-6"	12"	5,402	10A4013B	1,374	10A4013WOB	
	39'-1"	38'-7"	16'-0"	12'-0"	24**	6'-6"	12"	5,538	10A4016B	1,510	10A4016WOB	

Green shading reflects rental inventory.

\* Capped I-Beam



I-Beam	Flange Width
S6"-12.5#	3 3/8"
S8"-18.4#	4"
S10"-25.4#	4 3/8"
S12"-31.8#	5"
S15"-42.9#	5 1/2"
S18"-54.7#	6"
S24"-80#	7"



**Lifting Gear Hire Corporation | 800.878.7305**



www.lgh-usa.com | Hoisting