

Pallet Trucks

Model AA-5LN Pallet Truck Specifications



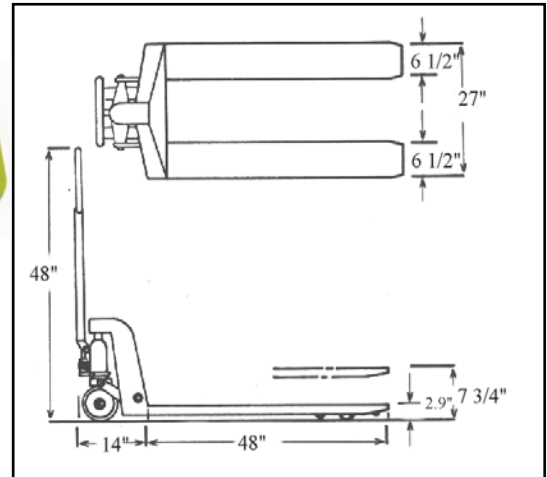
Easy as 1-2-3-4 to operate

End "Operation Acrobatics"

"Two feet on the floor" at all times

1. Lift - Lift load with short pumping strokes
2. Lower - Lower with light pressure on finger tip control
3. Neutral - Position
4. Brake - Safety spring loaded loop handle allows load to be lowered while in motion to act as a brake

Model AA-5LN



Mini-Lifts

- 2" Lowered height.
- 1.5" Lowered height.
- 2" 4-Way.

Dependability

- Leak-proof pump with overload capacity assures maintenance-free service.
- Hard chrome plated ram & piston.
- Sealed ball bearings throughout.
- Urethane seals and wipers.
- One piece formed steel "C" channel tapered, reinforced forks.
- Large steer wheels with "Ball-thrust" steering.
- Full adjustable push rods on forks.
- 200° pivot action maneuvers in compact areas.
- Only 3 bolts to remove hydraulic unit.
- Spring-A-Matic handle self returns.
- Tapered fork ends and nylon rollers permit easy entry and exit of pallets.
- Self lubricating bearings at all pivot points: no greasing required.

Other Special Features Available:

Platform trucks

Galvanized models

Tin plate models

Skid adapters

Brake attachment

Model AA-5LN Specifications

- **Load Capacity:** 5,500 lbs
 - **Lowered Height of Forks:** 2.9 inches
 - **Raised Height:** 7 3/4"
 - **Overall Width Across Forks:** 20 1/2" or 27"
 - **Fork Width:** 6 1/2"
 - **Standard Fork Lengths:** 32"-36"-42"-48"
- Special Widths & Lengths Available Upon Request
- **Load Roller:** 2.9" x 3.6"
 - **Front Wheel (steer):** 7" x 2"
 - **Body Length (including pump):** 14"
 - **Load Roller Axle to End of Trucks:**
 - Roller down 4 1/2"
 - Roller up 7 1/2"
 - **Wheels:** Poly / Nylon STD
- Optional Polyurethane, Nylon or Steel
- **Approximate Weight:** 170 lbs



AAtlas